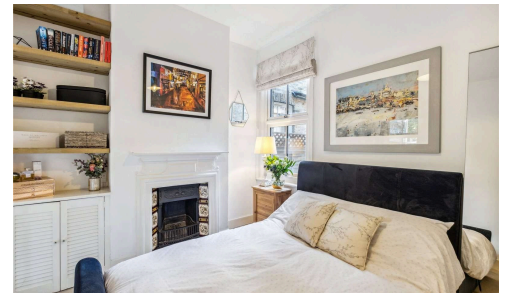


#1033



## Beautifully presented two bedroom garden flat

€1,300 /month

📍 South London, London

Arranged over the ground floor of this charming period terrace, this fantastic two-bedroom garden flat offers stylish and well-organised accommodation.

Upon entering, you are welcomed into a beautiful reception room, featuring a bay window that floods the space with natural light and is flanked by built-in cabinetry.

Bedrooms

🛏 2

Bathrooms

🚿 1

Covered

📏 50 m<sup>2</sup>

Energy efficiency rating

🌿 C



**Buddy Estates**



**Emilie Dupont**

📞 (+44) 7834562987

✉ e.dupont@buddyestates.com



All information (including but not limited to the property area, floor size, price, address and general property description) on this page is provided as a convenience to you, and has been provided to Buddy Estates by third parties.